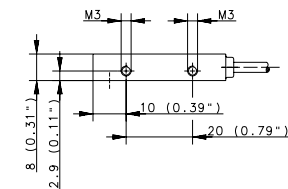
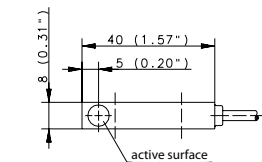
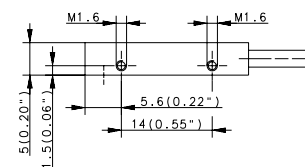
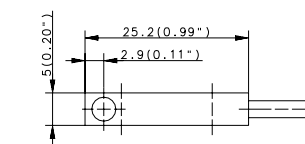
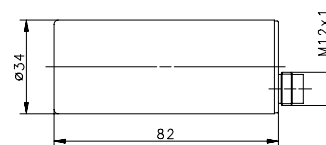
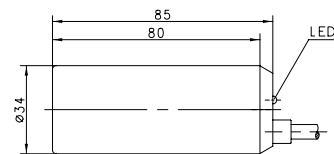


INDUCTIVE SENSORS Type Ø 34 mm, 5 x 5 x 25 mm, 8 x 8 x 40 mm



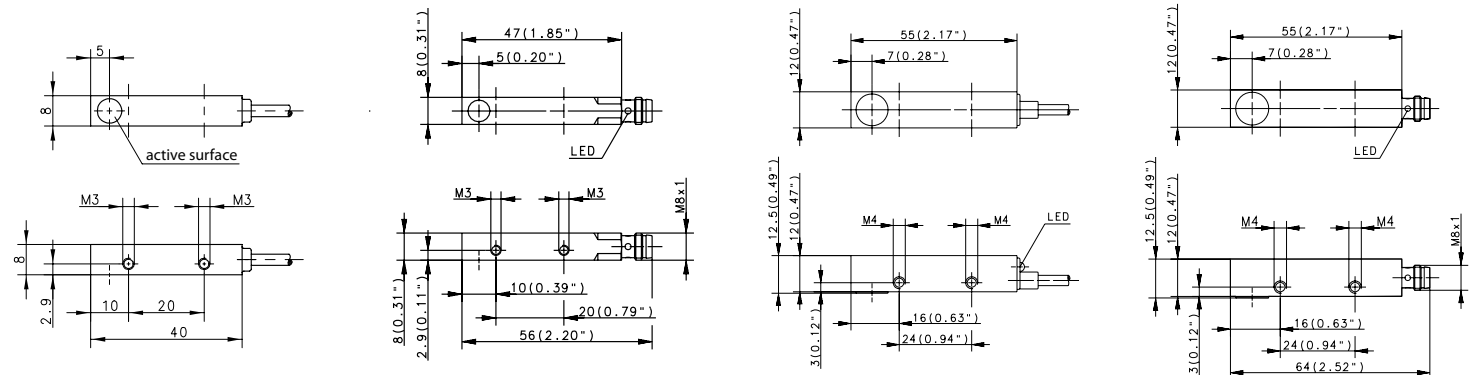
Type	Ø 34 mm	Ø 34 mm	5 x 5 x 25 mm	8 x 8 x 40 mm
Enclosure material	PBT, red	PBT, red	CuZn39Pb3	CuZn39Pb3
Type of installation	non-flush	non-flush	flush	flush
Nominal sensing distance	20 mm	20 mm	1.5 mm	1.5 mm
Type of connection	Cable 2 m	Connector	Cable	Cable 2 m
Special feature				
PNP	DC	NO contact	6502915002 KIN-R34PS/020-KL2	6502915004 KIN-R34PS/020-KS12
PNP	DC	NC contact		
PNP	DC	antivalent NO/NC	6502999026 KIB-Q05PS/001-K2PU	6502980004 KIB-Q08PS/1,5-K2
PNP	DC	NC contact	6502799010 KIB-Q05PÖ/001-K2PU	6502780001 KIB-Q08PÖ/1,5-K2
NPN	DC	NO contact		
Technical data				
Rated operating voltage range	U_B	10–60 VDC	10–60 VDC	10–30 VDC
Rated operating current	I_e	≤ 200 mA	≤ 200 mA	200 mA
Max. switching voltage	F	100 Hz	100 Hz	1000 Hz
Short circuit-protection		cyclic	cyclic	cyclic
Function/operating voltage indicator		LED/–	LED/–	–/–
Mechanical data				
Ambient temperature (min/max)		–25°C/+70°C	–25°C/+70°C	–25°C/+70°C
Protection class in accordance with IEC 529, EN 60529		IP67	IP67	IP67
Connection		3 x 0.5 mm ²	M12 x 1	3 x 0.05 mm ²



INDUCTIVE SENSORS Type 8x8x40 mm, 8x8x56 mm, 12x12x55 mm



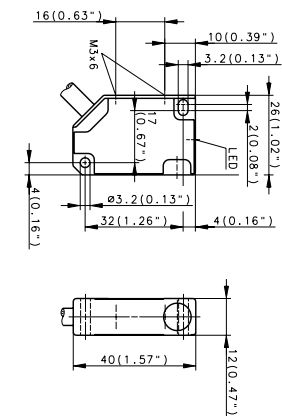
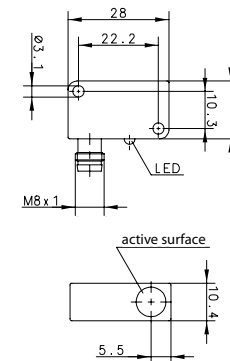
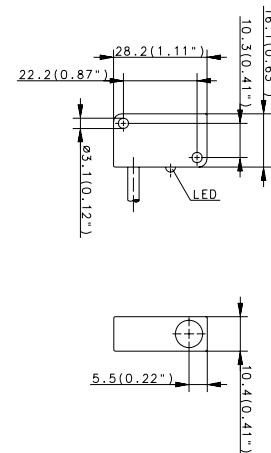
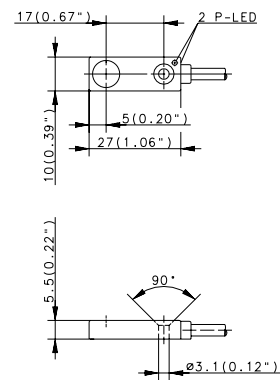
Type	8 x 8 x 40 mm	8 x 8 x 56 mm	12 x 12 x 55 mm	12 x 12 x 55 mm
Enclosure material	CuZn39Pb3	CuZn39Pb3	CuZn39Pb3	CuZn39Pb3
Type of installation	flush	flush	flush	flush
Nominal sensing distance	1.5 mm	1.5 mm	4 mm	4 mm
Type of connection	Cable 2 m	Connector M8	Cable 2 m	Connector M8
Special feature	Temperature			
PNP	DC	NO contact	650298002 KIB-Q08PS/1,5-K2T	650298002 KIB-Q08PS/1,5-KLSM8
PNP	DC	NC contact		650278002 KIB-Q08PÖ/1,5-KLSM8
NPN	DC	NO contact		6502399021 KIB-Q12NS/004-KLSM8E
NPN	DC	NC contact		
Technical data				
Rated operating voltage range	U_B	10–36 VDC	10–36 VDC	10–60 VDC
Rated operating current	I_e	≤ 200 mA	≤ 200 mA	≤ 200 mA
Max. switching voltage	F	1000 Hz	1000 Hz	800 Hz
Short circuit-protection		cyclic	cyclic	cyclic
Function/operating voltage indicator		–/–	LED/–	LED/–
Mechanical data				
Ambient temperature (min/max)		0°C/+100°C	–25°C/+70°C	–25°C/+70°C
Protection class in accordance with IEC 529, EN 60529		IP67	IP67	IP67
Connection		3 x 0.14 mm ²	M8 x 1	3 x 0.14 mm ²



INDUCTIVE SENSORS Type 27 x 10 x 5 mm, 28 x 16 x 11 mm, 40 x 26 x 12 mm



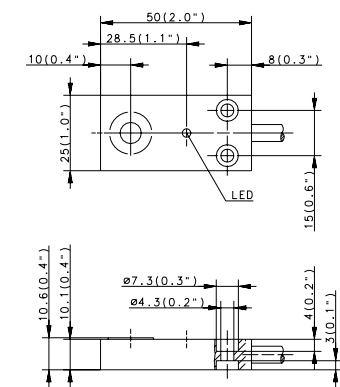
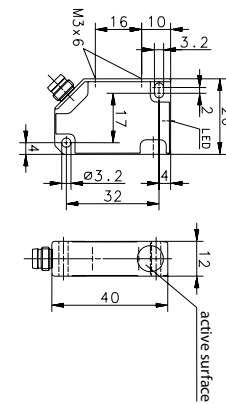
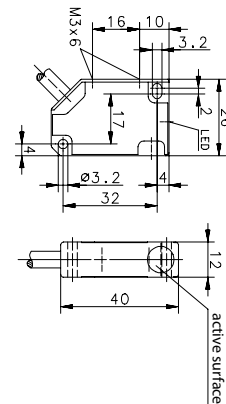
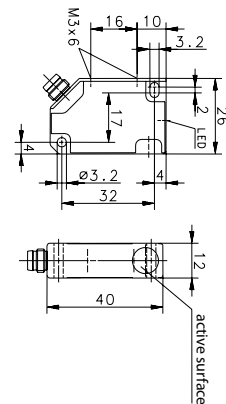
Type	27 x 10 x 5 mm	28 x 16 x 11 mm	28 x 16 x 11 mm	40 x 26 x 12 mm
Enclosure material	PA, black	PA, black	PA, black	PBT, black
Type of installation	flush	flush	flush	flush
Nominal sensing distance	1.5 mm	2 mm	2 mm	2 mm
Type of connection	Cable 2 m	Cable 2 m	Connector M8	Cable 2 m
Special feature				
PNP	DC	NO contact	6502993001 KIB-E27PS/1,5-KL2PU	6502973001 KIB-E28PS/002-KL2
PNP	DC	NC contact		6502973002 KIB-E28PS/002-KLSM8
PNP	DC	antivalent NO/NC		6502773001 KIB-E28PÖ/002-KLSM8
NPN	DC	NO contact		6502984023 KIB-E40PS/002-KL2
				6502784006 KIB-E40PÖ/002-KL2
Technical data				
Rated operating voltage range	U_B	10–30 VDC	10–30 VDC	10–30 VDC
Rated operating current	I_e	≤ 200 mA	≤ 200 mA	≤ 200 mA
Max. switching voltage	F	1000 Hz	800 Hz	800 Hz
Short circuit-protection		cyclic	cyclic	cyclic
Function/operating voltage indicator		LED/–	LED/–	LED/–
Mechanical data				
Ambient temperature (min/max)		–25°C/+70°C	–25°C/+70°C	–25°C/+70°C
Protection class in accordance with IEC 529, EN 60529		IP67	IP67	IP67
Connection		3 x 0.14 mm ²	3 x 0.14 mm ²	M8 x 1 3 x 0.5 mm ²



INDUCTIVE SENSORS Type 40x26x12 mm, 50x25x10 mm



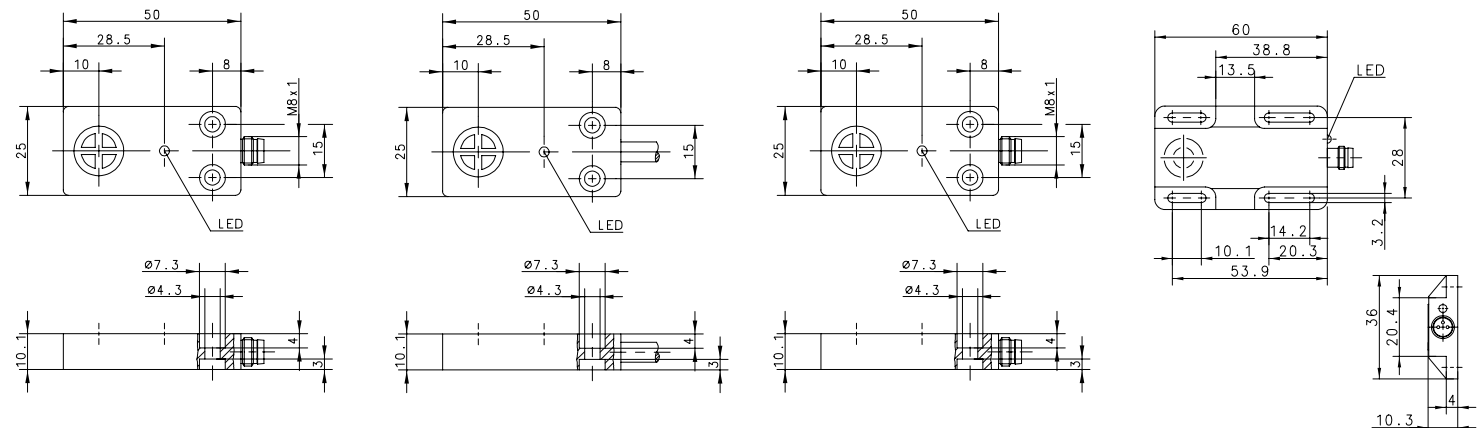
Type	40 x 26 x 12 mm	40 x 26 x 12 mm	40 x 26 x 12 mm	50 x 25 x 10 mm
Enclosure material	PBT, black	PBT, black	PBT, black	PA, black
Type of installation	flush	non-flush	non-flush	flush
Nominal sensing distance	2 mm	4 mm	4 mm	5 mm
Type of connection	Connector M8	Cable 2 m	Connector M8	Cable 2 m
Special feature				
PNP	DC	NO contact	6502984025 KIB-E40PS/002-KLSM8	6502984024 KIN-E40PS/004-KL2
PNP	DC	NC contact		6502784007 KIN-E40PÖ/004-KL2
NPN	DC	NO contact		6502384012 KIN-E40NS/004-KLSM8
NPN	DC	NC contact		6502990001 KIB-E50PS/005-KL2
6502390001				KIB-E50NS/005-KL2
Technical data				
Rated operating voltage range	U_B	10–36 VDC	10–36 VDC	10–36 VDC
Rated operating current	I_e	≤ 200 mA	≤ 200 mA	≤ 200 mA
Max. switching voltage	F	800 Hz	400 Hz	500 Hz
Short circuit-protection		cyclic	cyclic	cyclic
Function/operating voltage indicator		LED/–	LED/–	LED/–
Mechanical data				
Ambient temperature (min/max)		–25°C/+70°C	–25°C/+70°C	–25°C/+70°C
Protection class in accordance with IEC 529, EN 60529		IP67	IP67	IP67
Connection		M8 x 1	3 x 0.5 mm ²	M8 x 1



INDUCTIVE SENSORS Type 50x25x10 mm, 60x36x10 mm



Type	50 x 25 x 10 mm	50 x 25 x 10 mm	50 x 25 x 10 mm	60 x 36 x 10 mm
Enclosure material	PA, black	PA, black	PA, black	PA, black
Type of installation	flush	non-flush	non-flush	non-flush
Nominal sensing distance	5 mm	8 mm	8 mm	8 mm
Type of connection	Connector M8	Cable 2 m	Connector M8	Connector M8
Special feature				
PNP DC NO contact	6502990005 KIB-E50PS/005-KLSM8	6502990003 KIN-E50PS/008-KL2	6502990006 KIN-E50PS/008-KLSM8	
PNP DC NC contact		6502790002 KIN-E50PÖ/008-KL2		6602799048 KIN-E60PÖ/008-KLSM8
PNP DC antivalent NO/NC		6502390002 KIN-E50NS/008-KL2		
NPN DC NO contact				
Technical data				
Rated operating voltage range	U_B 10–60 VDC	10–60 VDC	10–60 VDC	10–60 VDC
Rated operating current	I_e ≤ 200 mA	≤ 200 mA	≤ 200 mA	≤ 400 mA
Max. switching voltage	F 500 Hz	200 Hz	200 Hz	200 Hz
Short circuit-protection	cyclic	cyclic	cyclic	cyclic
Function/operating voltage indicator	LED/–	LED/–	LED/–	LED/–
Mechanical data				
Ambient temperature (min/max)	–25°C/+70°C	–25°C/+70°C	–25°C/+70°C	–25°C/+70°C
Protection class in accordance with IEC 529, EN 60529	IP67	IP67	IP67	IP67
Connection	M8 x 1	3 x 0.5 mm ²	M8 x 1	M8 x 1



INDUCTIVE SENSORS Type 68x30x15 mm, 40x40 mm



Type	68x30x15 mm	40 x 40 mm	40 x 40 mm
Enclosure material	PBT, black	PA, red/black	PA, black
Type of installation	non-flush	non-flush	non-flush
Nominal sensing distance	7 mm	20 mm	
Type of connection	Cable 2 m	Connector M12	Cable 6 m
Special feature			Ring sensor
PNP	DC	NO contact	6502956076
			KIN-E68PS/007-KL2
PNP	DC	NC contact	6502982003
			KIN-N40PS/020-KLS12
NPN	DC	NO contact	6502999036
			KIR-N40PS/000-KL6
NPN	DC	NC contact	6502156058
			KIN-E68NÖ/007-KL6
Technical data			
Rated operating voltage range	U_B	10–60 VDC	10–36 VDC
Rated operating current	I_e	≤ 200 mA	≤ 200 mA
Max. switching voltage	F	200 Hz	50 Hz
Short circuit-protection		cyclic	cyclic
Function/operating voltage indicator		LED/–	LED/–
Mechanical data			
Ambient temperature (min/max)		–25°C/+70°C	–25°C/+70°C
Protection class in accordance with IEC 529, EN 60529		IP67	IP67
Connection		3 x 0.5 mm ²	3 x 0.5 mm ²

